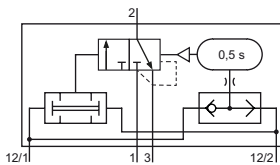


**Technical details**

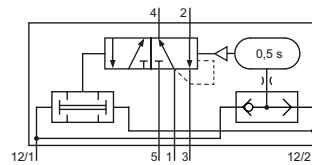
<b>Temperature range</b>	-10°C ... +70°C
<b>Medium</b>	Filtered, oil-free and dried compressed air according to ISO 8573-1:2010, Class 7:2:4, instrument air, free of aggressive additives. Alternatively the pressure dew point must be at least 10°C below lowest occurring ambient temperature.
<b>Materials</b>	Body: Al (anodized), seals: NBR and POM, inner parts: Al, stainless steel and brass



The valve operates after two input signals at 12 arriving within 0.5 s.  
 The valve is actuated as long as the signals continue.  
 If the input signals do not arrive within 0.5 s, the valve does not operate.  
 Both signals must be reset before the valve switches back on.

**3/2-way valve**


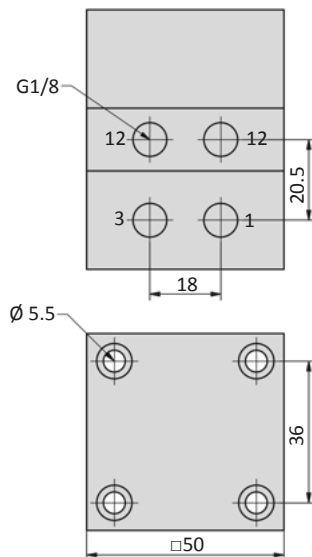
**SZ-18-310**  
two-signal controls,  
3/2-way

**5/2-way valve**


**SZ-14-510**  
two-signal controls,  
5/2-way

**Technical data**

Model-no.:	SZ-18-310	SZ-14-510
<b>Connection</b>	G1/8	G1/4
<b>Nominal size (mm)</b>	4	8
<b>Operating pressure (bar)</b>	4 ... 10	4 ... 10
<b>Pilot pressure (bar)</b>	4 ... 10	4 ... 10
<b>Flow rate (NI/min)</b>	280	1300
<b>Weight (kg)</b>	0.360	0.825

**Dimensions**
**SZ-18-310**

**SZ-14-510**
