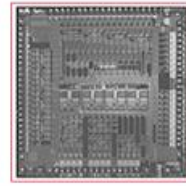




BCM3440



**BCM3440 DIRECT CONVERSION SATELLITE TUNER**

BCM3440	FEATURES	SUMMARY OF BENEFITS
	<ul style="list-style-type: none"> <li>• Direct conversion architecture in standard CMOS process</li> <li>• Supports QPSK and 8PSK demodulation</li> <li>• Input frequency range: 950 to 2150 MHz</li> <li>• Supports 1 to 45 Mbaud data rates</li> <li>• Input signal: -25 to -70 dBm</li> <li>• Baseband in-phase and quadrature outputs</li> <li>• Programmable bandwidth I/Q baseband filters</li> <li>• Integrated LO with on-chip VCO and PLL</li> <li>• Integrated LNA with RF AGC</li> <li>• On-chip IF AGC</li> <li>• Two wire I2C host interface</li> <li>• Differential signals for high noise immunity</li> <li>• Uses a low-cost crystal</li> <li>• 3.3V operation</li> <li>• 48-pin TQFP</li> </ul>	<ul style="list-style-type: none"> <li>• Designed to work with the BCM4500 and BCM4201 satellite receivers</li> <li>• Operates across entire satellite L-band frequency range</li> <li>• Extremely low phase noise for operation with 8PSK modulation systems</li> <li>• Highly integrated solution minimizes design time and system cost</li> <li>• Operates using single 3.3V supply to eliminate the need for 5V</li> <li>• Complete reference design available to minimize customer RF expertise requirement</li> </ul>

BCM3440 Tuner Application Example (Satellite Set-Top Box)

